



## Thanks for your Support/Membership Benefits

*The Board of Directors of the Nelson and District Chamber of Commerce would like to thank you for your on going support of the Chamber. Your membership in 2007 helped the Chamber reach an all time high membership of nearly 500 businesses, organizations and individuals. Your continued support allows us to pursue many worthwhile initiatives for the benefit of our greater community.*

*The Nelson & District Chamber of Commerce is very much looking forward to 2008, during which time we will continue working on several exciting economic development initiatives. These include the Nelson Economic Development Partnership with the City of Nelson and Community Futures of Central Kootenay, Invest Kootenay, The CP Rail Restoration project, as well as coordinating the formation of the Nelson Area Tourism Partnership.*

*The NATP is a model for Nelson's proposed Destination Marketing Organization. The NATP is designed to provide leadership and a unified direction to the tourism industry in the region. By leveraging other resources regionally, we can create a sustainable tourism economy in our area and a sustainable marketing organization that operates with secure funding and strong governance. By building on the strengths of existing organizations, and our abundance of regional product, The Nelson-Kootenay Lake Area is well positioned to develop tourism as a stronger more consistent economic generator.*

*The Chamber expects to finalize the acquisition of CP Rail Station at the foot of Baker Street in 2008, to begin the initial phase of the restoration of the historic station house. The Chamber is currently working with community groups and interested stakeholders in developing an overall vision for the project. Plans include the Chamber, Visitor Centre, a Regional Interpretive Centre and the Nelson Economic Development Partnership to be housed on site.*

*Again, thank you very much for your ongoing support of the Nelson & District Chamber of Commerce. Without members, a Chamber of Commerce simply would not exist. Working together, we can help build a stronger Chamber, and in turn a stronger economic region.*

*Becoming a member of Nelson and District Chamber of Commerce can save you and your business money. As a member of the BC Chamber of Commerce we are proud to have the following benefits providers as part of the Nelson Chamber of Commerce Benefit Plan. For information on these benefits, please contact us at the Chamber 250 352-3433, or email [info@discovernelson.com](mailto:info@discovernelson.com)*

### **VERSA PAY**

*The Chamber of Commerce and Versapay now offer a new Visa/Mastercard and Interac Program the program offers 1.65% on Visa or Mastercard credit receipts LESS THAN \$100 and 1.70% on Visa credit receipts MORE THAN \$100*

*Versa Pay also offers a \$0.07 per transaction Interac Fee.*

*Terminal Fee of \$29.99 per month*

*For details, check [www.Versapay.com](http://www.Versapay.com)*

### **CEG ENERGY OPTIONS INC.**

*Unbundling program provides all commercial customers with the option of a guaranteed fixed gas price for 5 years and savings of 10% to 50% on longer term price options. Not available on Vancouver Island and in both North Western and North Eastern BC.*

## Membership Benefits

### GROUP INSURANCE PLAN

*Covers all industries including one person firms, home businesses and farms. Possible benefits include life, health, dental and travel care insurance, vision care, short and long term disability, business overhead benefits and many others. Guaranteed renewable contract and fully pooled price stability.*

*For details on the Chamber of Commerce Group Insurance Plan, please contact Glenn Sutherland at Sutherland and Associates Financial Service 250 352-3518, or contact the Nelson and District Chamber of Commerce. A Group Insurance Plan can be developed that is tailored to your needs, whether you are a 1 or 2 person operation, or a business that employs dozens of people.*

### ESSO IMPERIAL OIL

*3.0 cents per litre discount on fuel, oil, top-up fluids and car wash for each Canadian purchase at any Esso Service Station, with a minimum purchase of \$1500 or 3000 litres per year.*

### HUSKY/MOHAWK

*2.0 cents per litre discount on all fuel purchases at any Husky or Mohawk location, with no minimum purchase required. Single invoice for all Husky and Mohawk purchases.*

### PAYWORKS

*Basic Run Charge of \$10 and a one-time only fee of \$25, along with a \$1 charge per Direct Deposit or Cheque. Integration with Chamber Group Insurance Plan and easy entry of payroll via phone, fax or online.*

### PRIMUS

*3.5 cents per minute for long distance calls anywhere in Canada and the US, 25-75% savings on Talkbroadband for as low as \$27.95 per month and Online Data Backup for as low as \$4.95 per month. DSL Bundles.*

## Membership Benefits

### ROGERS WIRELESS

*5% and 10% discounts on hardware and other special pricing options.*

### SHELL

*2.5 cents per litre discount on the posted pump price for your gasoline and diesel retail purchases with the Shell Commercial Card.*

### PETRO CANADA

*2 cents per litre discount on all grades of gasoline and diesel, with a minimum purchase of 200 litres per month, and a 5% discount on vehicle propane purchased at Petro-Canada retail service stations.*

### TD MERCHANT SERVICES/FIRST DATA INTERNATIONAL

*1.69% on Visa credit receipts, 1.79% on MasterCard credit receipts and \$0.09 on Interac Direct Payment receipts—all with electronic deposits. No application fee.*

**Please contact us for  
information on how to  
access these benefits.**

**Nelson & District Chamber of  
Commerce**

**225 Hall Street**

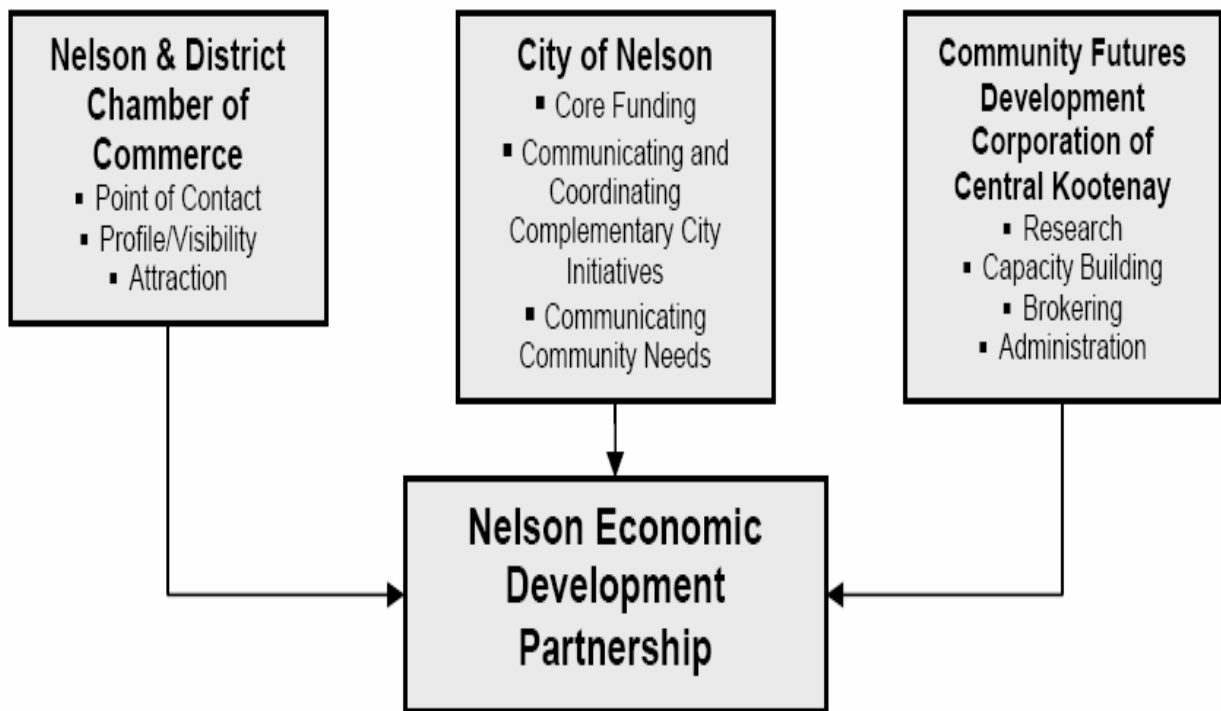
**Nelson, BC V1L 5X4**

**250-352-3433/1-877-663-5706**

**info@discovernelson.com**

# Nelson Economic Development Partnership

The Nelson Economic Development Partnership has recently completed a review of the 2007 work plan, and looking forward to 2008. The NEDP has been building on a successful partnership that was established in 2005.. Here is a look at the NEDP structure:



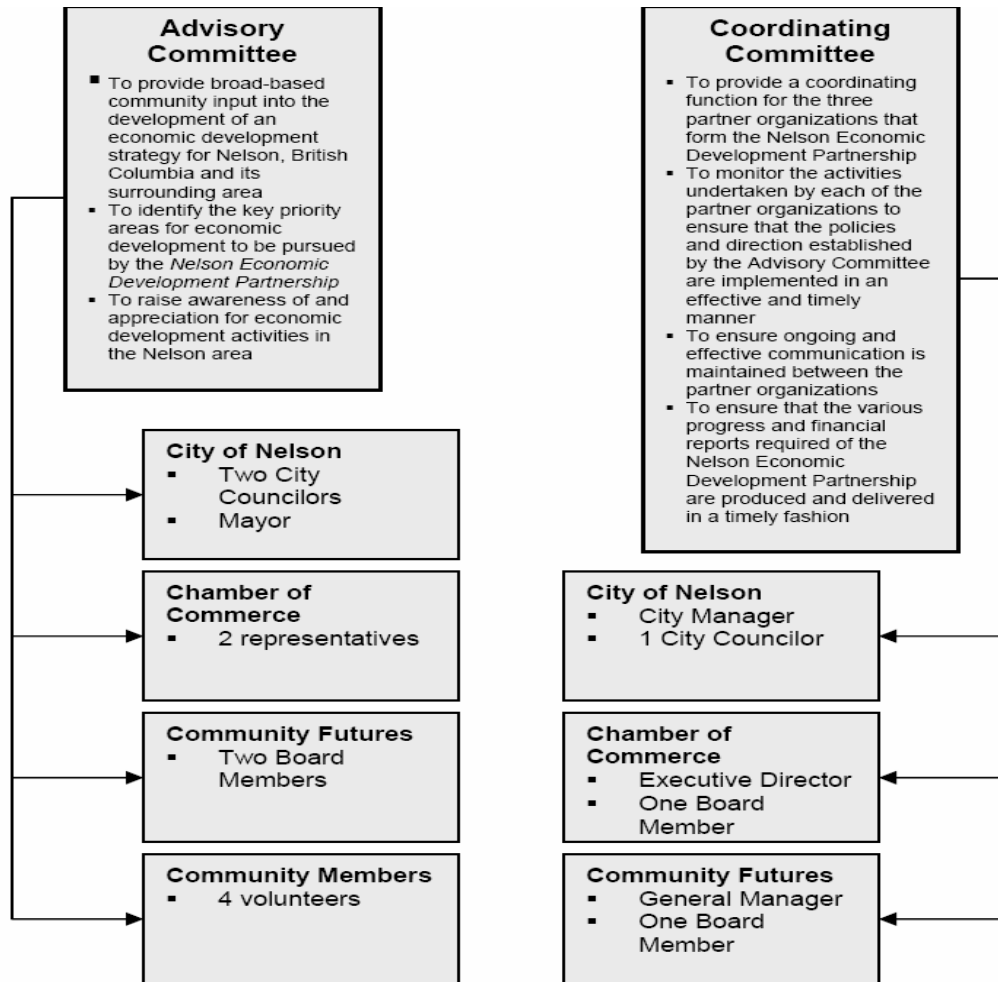
*The approach the NEDP uses is based upon:*

- *Focusing on Priorities*
- *Being a catalyst or driver*
- *Seeking out partnerships*
- *Building regional collaboration*
- *Open Door policy*
- *Receptive to new opportunities*
- *Leveraging resources*

**5 priority areas** were identified in the 2007-08 work plan

- *Business Retention & Expansion*
- *Business Investment & Attraction*
- *Communications and Sector Strengthening*
- *Improving Infrastructure*
- *Labour Market Issues*

# Nelson Economic Development Partnership Committee Structure



**Bob Wright of Community Futures and Woody Wudkevich, NEDP Community Advisory Committee member, take an active role in the recent 2008 strategic planning session. This year will see an expansion of the Invest Kootenay website and Community Ambassador program, a renewed focus on labour market issues through participation in Regional Skills Councils and other labour market initiatives.**

## **BC Chamber calls on government to remain focused on the economy**

*The British Columbia Chamber of Commerce welcomes the Throne Speech as containing some important initiatives but cautions that they must remain focused on the need for long term economic growth and prosperity.*

*"It is becoming increasingly clear that global events are impacting the economic prosperity of communities across BC. Whether it is the value of the loonie, the US slowdown, or the skills and labour shortage the economy is facing significant pressures," says John Winter, President and CEO of the BC Chamber. "Our members have sent us clear message, our current economic strength is depending on proactive policy and more needs to be done to address many of the key challenges we face, particularly around our productivity and competitiveness."*

*The Chamber was pleased to see action on a number of recommendations made by Chamber members. Our members will welcome commitments made in the Throne Speech to the expansion of the Provincial Nominee Program, the expansion of BC's public university system, as well as the commitment to our role as the Gateway to Asia Pacific through the expansion of Prince Rupert and the development of a new Pacific Port Strategy.*

*Our members recently identified crime and public safety as a priority for communities across BC, with that in mind the Chamber also welcomes the focus on creating safe, secure communities. "The commitment to review sentencing practices is a good first step in addressing the challenge of a revolving door judicial system that does not do enough to keep criminals off the streets. Further to this the commitment to explore amalgamation of police forces will go a long way towards developing more integrated, effective policing" states Winter.*

*"While our members will welcome these initiatives they will note the lack of a long term economic vision, particularly around the skills shortage. Indeed, when community chambers of commerce were recently asked to identify the top public policy issues facing their communities every member that responded identified the skill and labour shortage as the single biggest issues facing their businesses," continued Winter.*

*"The Chamber continues to believe that there is a critical role for government to provide businesses, particularly small business, with the tools they need to develop a skilled workforce, an essential part of addressing our ongoing productivity challenge.*

*The Chamber calls on the Provincial Government to ensure that Budget 2008 include a Small Business Training Tax Credit to encourage business to step up and increase their training quickly and would have an immediate impact on addressing the growing skills shortage that will impede future economic growth if not addressed in a proactive fashion."*

**Got an event coming up?  
Go to [www.discoverNelson.com](http://www.discoverNelson.com)  
and post it to our on-line  
calendar. It's free!**

**You can also add your  
business information to  
our business database.**

**That's free too!**



**The Nelson and District  
Community Complex is offering a  
FREE Open House on Saturday  
February 16th**

**Spirit of BC Week Feb 8-16**

*A celebration of the province and its unique communities as well as a countdown to the 2010 Olympics.*

**Thursday February 14th** South Nelson/  
Gordon Sergeant Valentine's Day Skate at  
Lions Park 6:00 – 7:30 pm - Free Admission

**Thursday February 14th** NDCC Aquatic Cen-  
tre : Deep Water Aquafusion For Couples  
6:00 – 7:00 pm – 2 for 1 drop in when you  
bring your significant other!

**Friday February 15th** Rosemont School Sled-  
ding 1:15 – 3:00 pm - Free Admission

**Friday February 15th** The Kootenay Lake  
DPAC proudly Presents: **Silken Laumann:**  
The Power of Play @ LV Rodgers Sec-  
ondary School 7:00 – 8:30pm - Free Admis-  
sion

**Silken Laumann** brings the same dedication,  
passion and integrity for which she is known,  
to the important area of child health.

Her presentation 'The Power of Play: Building  
Better Communities' will help community lead-  
ers to answer the question "What can we do?"  
to help children become more physically ac-  
tive. Silken will also speak about building safe,  
supportive communities and rediscovering the  
joy of play in our families.

**Saturday February 16th** Play in the Park @  
Lions Park 10:00am – 12:00pm - Free Admis-  
sion

**February 16, 2008 8:00 am – 8:00 pm**

**Aquatic Centre**

8:00 – 9:00am	Masters Swim
1:00 – 1:30 pm	Gentle Aquafit
1:30 – 2:00 pm	Shallow Aquafit
2:00 – 2:30 pm	Deep Water Running
2:30 – 3:00 pm	Aquabox
3:00 – 3:30 pm	Parent and Baby
3:30 – 4:00 pm	Aquafusion
4:00 – 8:00 pm	Free Public Swim

**Fitness Studio**

9:15 - 10:30 am	Power Step
10:30 – 11:00 am	Body Conditioning
11:00 – 11:30 am	Spin
11:30 – 12:00 pm	Belly Fit
12:00 – 12:30 pm	Nia
12:30 – 1:00 pm	Feldenkrais

**Arena**

3:30-5:30pm	Free Public Skating
-------------	---------------------

Special thanks to Get out Get Active (GOGA)  
committee members, The Nelson and District  
Community Complex and Staff, Success by  
Six, and Silken Lauman for their participation  
in making this years Spirit of BC Week so suc-  
cessful.





## The newest wave to work, the best way to hire!

2008 promises to be a strong economic year in British Columbia. Nonetheless, there are still people who are out of the workforce, ready to re-engage in employment.

At JobWave, they can help you connect with these talented, motivated people so you can grow your business!

## HOW JOBWAVE BENEFITS EMPLOYERS

If you would like to be the next employer to hire qualified, job-ready candidates through JobWave, call us today at **1-888-JOBWAVE** and enjoy the following benefits:

- our team will tailor the hiring process to meet the needs of your business
- candidates will be pre-screened for skills and attitude, saving you valuable time
- you'll avoid screening fees, placement fees and costly newspaper ads with our free job postings and placement services
- ongoing support from the field still be provided to ensure long-term success in the workplace

## LOOKING FOR A FEW INTERVIEW TIPS?

Try these questions to get the answers you need!

1. Tell me a little about yourself
2. Why are you interested in this job?
3. What is your relevant experience?
4. What are your interests outside of work?
5. What are your greatest weaknesses?
6. What do you want to be doing five years from now?
9. Why should we hire you for this position?
10. Do you have any questions for me?



## Contact JobWave Today

To find out about hiring through JobWave, call your Nelson JobWave Service Provider, Ashland Training Centre at 352-0966 or Don Strang at 1-888-JOBWAVE.

JobWave is delivered by WCG International HR Solutions in partnership with the Ministry of Employment and Income Assistance. WCG has helped clients attain over 66,000 job placements since 1995.



## **Ashram Gets National Exposure**

*A recent edition of Canadian Geographic Travel, Canada's most prestigious travel magazine, featured a vibrant eight page spread on Yasodhara Ashram in Kootenay Bay, as well as highlighting some of the important services available in Nelson.*

*This article draws attention to some of the amazing attractions the Kootenays have to offer, and is complimented with beautiful photographs taken by local photographer Steve Ogle. The photographs capture scenes from a day in the life at the Ashram to a stunning view of Kootenay Lake, blessed by a vibrant rainbow. Also included is a map of the greater Kootenay region alongside a photograph that conveys Nelson's unique character, covered in a light blanket of snow.*

*Edmonton based writer Lisa Gregoire, who left the city for a 3-day yoga retreat at the Ashram in June, wrote this inspirational article. In describing her appreciative experience, Gregoire urges her fellow city dwellers to "step away from your personal digital assistant, and follow me to Yasodhara Ashram, 50 hectares of blissed out peace on the shores of Kootenay Lake, a half-hour drive north of Nelson, BC., and a 40-minute ferry ride away from the world as you know it."*

*The article entitled, "Om Free" also offers information specific to traveling to Nelson, including places to stay, activities in which to participate, and general information. It highlights the appeal of spending time in the area as a whole, which benefits Nelson and assists tourism in the greater community. This is a great step towards supporting the Nelson and Area Tourism partnership, working together with the larger community to support our tourism and marketing goals.*

*Tourism British Columbia wrote to the Ashram in regards to the Canadian Geographic Travel article, to say "although we have a thriving Media Relations Program, we would be hard-pressed to host journalists without the continued support of BC's tourism product suppliers.*

*Canadian Geographic Travel, with a paid subscriber base of 197,000 from across Canada, the US and England targets a broader audience than previous publications the Ashram has been highlighted in, such as the Toronto Star, the Vancouver Sun, and CBC radio. The article has already boosted the numbers registering for our workshops and retreats.*

*We further plan to deliver 700 copies of this issue, expanding the potential to draw a broader audience to the Kootenay region. The Ashram currently attracts over 1000 visitors per year from all areas of Canada, the United States, and various international countries including Australia, Germany, and Japan.*

---

## **Bank Of Canada Speaker to present in Nelson**

*The Nelson and District Chamber of Commerce and the Nelson Noon Hour Rotary Club is pleased to present a state of the economy Update from the Bank Of Canada.*

*As part of the Bank's mandate to keep the public informed about monetary policy and economic activity, Dr. Farid Novin, Senior Rep for BC & Yukon, provides presentations on the state of the economy as well as the objectives of the Bank of Canada in promoting economic stability. This presentation provides an excellent medium for the Bank of Canada to interact with the community and communicate openly about monetary policy, as well as trends and developments in the Canadian economy.*

*The Chamber of Commerce is pleased to be able to partner with the Rotary club for this luncheon presentation **Friday February 29th, 12o'clock at the Hume Hotel.***

*Dr Novin's Bank of Canada's presentation will have limited seats available. Chamber members can reserve a ticket in advance by calling 250 352-3433 by February 27th. The price per person is just \$11.00 with your lunch buffet Included.*

# WELCOME TO OUR NEWEST MEMBERS

## **The Traditional Timber Framing**

*Joern Wingender  
6850 Harrop-Proctor Road  
Nelson, BC V1L 6R2  
229-2120*

*timberframe@hanwerk-bc.com*

**Timber Framing, Architectural Restoration,  
General Contracting**

## **Sapana WoolenWear**

*Sarah Mitchell  
3579 S. Slocan Village Road  
South Slocan, BC  
359-2208*

*sapana@woolwear.ca*

**Wholesale Knit Wool Clothing, Toques &  
Accessories**

## **Himalayan Goji Juice**

*Diana Potyok  
PO Box 464  
Kaslo BC V0G 1M0  
353-9655  
dpotyok@teluse.net*

**Nutritional Health Supplement**

## **Wonow Media**

*Vince Hempsall  
1018 Stanley St  
Nelson, BC, V1L 5P9  
505-5705  
info@kootenaybride.com*

**Publisher of Kootenay Bride Magazine**

## **Always Up Front Pawn & Mini Storage**

*Mike Horvath  
519 Front Street  
Nelson BC V1L 4B4  
354-4669*

*alwaysupfront@telus.net*

**Used Goods Pawn Shop & Mini Storage**

## **Kutenai Gardens Cottage**

*Donna Goddard  
4168 Highway 3A  
Nelson BC V1L 6N1  
825-4623*

*kutenaigardens@shaw.ca*

**Vacation Rental**

## **Warren Macdonald Unlimited Inc.**

*Po Box 235  
Winlaw, BC V0G 2J0  
226-7936*

*[contact@warren-macdonald.com](mailto:contact@warren-macdonald.com)*

**Professional Speaker**

## **Nelson Whitewater Rafting Company Ltd.**

*53-1810 Summit Drive  
Kamloops, BC V2E 2C7  
(250)374-4281*

*[nelsonwhitewaterrafting@gmail.com](mailto:nelsonwhitewaterrafting@gmail.com)*

**River Rafting Trips**

## **Vanishing Falls B&B**

*2935 Upper Slocan Park Road  
RR#1, Site 2, Comp 14  
Slocan Park, BC V0G 2E0  
226-6929*

*calburton@columbiawireless.ca*

# A BIG THANKS TO OUR RENEWING MEMBERS

*Elk Valley Sustainability  
Sutherland Massage Prod  
Blue Sky Clothing Co.  
Chris Rowat Design  
Harrop Proctor Community Cooperative  
Bealby Road Beach House  
SK Electronics  
Waste Management of Canada  
Cutler's News  
Mountain Hound Inn  
Terra Erosion Control Ltd  
That Craft Store  
Wall Tone Painting & Contracting  
APX Enterprises Inc  
Heritage Roofing and Sheet Metal Ltd  
Hipperson Hardware  
Leo's Pizza & Greek Tavern  
LV Rogers Secondary School  
Maglio Industries  
Mistaya Country Inn  
Nelson Business Association  
Nelson Regional Sports Council  
Packrat Annie's  
RCI Construction and Design  
Shoes for the Soul  
Spilker Kew & Watson*

Nelson Kiwanis Projects  
Otter Books Inc  
Powder Creek Lodge  
Rub It In Mobile Massage & Accupressure Services  
The Lakewood Inn  
The Whole School (West Kootenay Ed. Resource)  
Mathieson, Cameron  
Birch Grove RV Park & Marina  
Andex Rental & Sales Ltd.  
Bear Spring Enterprises Ltd.  
Nelson & District Credit Union  
Scotiabank  
Silver King Mine C/O Arbutus Resources Ltd  
Kootenay Savings Credit Union  
Taylor Wilton Nelson  
Fortis BC  
Jenergy (Sustainable living)  
Walmart Canada Ltd  
Function d'Eva  
Nelson Toyota (Renwick Ventures Inc)  
Osprey Resource Management  
Touchstone GIS Services Inc  
All Seasons Cafe  
CDE Ventures Ltd  
Gerick Cycle & Sports  
Northway Trucking  
Poulin Agencies Ltd  
Rivers, Oceans & Mountains Shop  
Academy of Classical Oriental Sciences  
David Gentles (Nelson Realty Ltd.)  
Hairy Productions Sound & Lighting  
Kootenay Industrial Supply  
Life Moments Photography  
Nancy Selwood, RMT  
Troy Trillo, Barrister & Solicitor  
Van Hellemond Sport  
Wesbild Holdings Ltd (Chahko Mika Mall)  
CF Group Inc.  
DHC Communications  
Eddy Music  
Erickson Carol & Paul  
Nelson City Campground  
PFW Publications Ltd  
West Kootenay Eco Society  
White House Backpackers Lodge(Inn816)  
Wing Creek Resort  
Columbia Power Corporation  
Kalae Holdings (Greyhound Canada)

Moser, Mr Warren  
Save On Foods  
Willow Point Beach House  
Civic Auto Repair  
Carmichael, Toews , Irving Inc  
Craft Connection  
Diana Haschke Chartered Accountant  
Dr M S Culham  
Hairlines  
Nelson Ready Mix  
Pennco Engineering  
Reo's Videos  
Selkirk Paving Division of Interoute Construction Ltd  
Timberland 2001  
Vision Mountain Training Inc  
Wright Wheels  
Color Your World  
Berg Naqvi Lehmann  
Branch Services Ltd.  
Castlegar RV Park and Campground  
Investor's Group  
J.M. Autobody N' Paint  
Jadick Dr C (Redfish Beach House)  
Kootenay Country Co-op  
Nelson Golf & Recreation Society  
Touchstone Museum of Art & History  
West Canada Bike Tours  
Association des Francophones des Kootenays Ouest  
Kootenay Lake Electric  
Quiznos  
Randy's Backhoe Service Ltd  
Kastlerock Bed and Breakfast  
Dillon Consulting Limited  
Glacier Cab Company  
Nelson Professional Fire Fighters Assoc. Local 1343  
Pro Equipment Repair Inc  
Villa Dome Quixote  
Wake Up N Ride Wakeboard School  
Always Up Front Pawn and Mini Storage  
12 Mile Mini Storage  
Balfour Superette 1977 Ltd  
Black Press(Western Star)  
Canadian Cancer Society Nelson Unit Office  
Chinook Marketing Inc.  
Cottonwood Autobody  
Insurance Corporation of BC  
Nelson Box Office & Copy Centre  
Budget Car & Truck Rental (Cplus Multimedia)

Inc)  
Kootenay Express Communications Corp  
Midas Auto Service Experts  
Pacific Insight Electronics  
RHC McDonald Curriers Insurance Brokers  
Ltd  
Garden View Retreat B & B  
H & R Block  
CIBC Wood Gundy  
Kootenay Society for Community Living-  
Bigby Place  
Queen City Transportation Ltd  
G & G Holdings (Balfour Repair Service)  
Mountainview Tropicals  
Nelson Whitewater Rafting Company  
Eagle Bay Garden Suite & Vacation Rental  
Crag Holdings  
Your Dollar Store with More  
Boccalino  
Ainsworth Hot Springs Resort  
Baldface Lodge  
Bank of Montreal  
Bergevin Electrical Contracting Ltd.  
Columbia Basin Trust  
Community Futures of Cent Koot  
Corporation of the City of Nelson  
Dandelion B&B  
Darkwoods Forestry  
Edward Jones  
Glass House Optical  
Good Look Graphics  
Kaslo Shipyard Corp Ltd  
Kootenai Moon Furniture  
Kootenay Bakery Cafe Cooperative  
Kootenay Growers Supply Ltd  
Nelson Brewing Company  
Nelson C.A.R.E.S. Society  
Panorama Silviculture Inc  
Peter B Williams  
Peter Then (0286031 BC Ltd)  
Re/Max RHC Realty  
S Hawes Contracting Ltd  
Septen Financial Ltd.  
Split Shot Charters  
Stryck Design Studio  
Sunflower Inn Bed and Breakfast  
Superior Lighting & Bath  
The Natural Plaster Company  
The Vacuum Design  
Thor's Pizza Ltd  
Towering Pines Bed and Breakfast  
Vince's Specialty Footwear Ltd  
Wedgwood Manor  
West Arm Truck Lines  
Laser's Permanent Touch  
Mountain Media  
On Site Chair Massage  
Emerald Lakes Bed and Breakfast Inn  
Nelson Denture Clinic Ltd  
North Shore Inn  
Cedarwood Cottage B & B  
Kokanee Springs Resort Ltd  
Raven Creations  
Sutherland & Associates Financial Services Ltd  
Cedar's Lakeshore Inn  
Choice Tile & Stone  
Kimberley Community Development Society  
Nelson Pilots Association  
Procter General Store  
Silver King Heritage - Nana's Place B & B  
Tushuko Holdings (Mistiso's Place Guest House)  
Catherine Llewellyn Cleaning  
Country Furniture Ltd  
Dunk, Mr Terry  
Kootenay Paradise B & B  
Van Houtte Inc.  
Dr. Alex Poole/Hildur Jonasson  
AdvoCare Home Health Services  
Apex Geoscience Consulting  
Dancing Bear Inn  
Kootenay Medical Aesthetics Ltd  
Michele Greco  
Selkirk College  
Evergreen Forest Services Ltd  
Nelson Daily News  
New Grand Hotel  
Pharmasave  
Valhalla Safety/ RWJT Enterprises Ltd  
Visitors Choice Publications  
Dr Larry Bickerton  
Kal Tire Nelson  
Koocanusa Publications  
Max & Irma's Kitchen  
Ramp Body & Fender Works  
Cowan Office Supplies Ltd.  
Kootenay Insurance Services Ltd.  
Morrison, Janice  
Remedy's Custom Compounding Pharmacy  
Rocky Mountain Business Consulting  
Snowwater Heli Skiing Inc

Valhalla Powdercats Inc  
Annie's Maternity Corner  
Beach Taghum B&B  
Cloud Side Inn (formerly Inn the Garden)  
Cottonwood Kitchens  
Guy Koehle Ltd  
Habits  
Kline's RV Park  
Lang Business Systems  
Martin Entrprises Inc.  
Matt Ander  
OK Tire & Auto Service  
Royal Bank of Canada  
Simply Be & B  
Wagg's Boarding & Grooming  
Balfour Recreation Commission  
Ingenious Software  
Robichard Renovations  
Selkirk Eye Care  
Snowpack Outdoor Experience  
Still Eagle Planetary Persuasions  
Terratherma Geothermal Heating Ltd  
Sandman Hotel Castlegar  
Camsign Ventures Ltd (Uniglobe Glacier  
Travel)  
Conlin Ent. Ltd (Main Street Diner)  
Fairview Esso Service  
Georama Growers  
Nelson Mini Storage  
Springer Creek Forest Products  
Alpine Motel  
Chillers Pub -  
High Terrain Helicopters  
John Dooley Contracting  
Kokanee Physiotherapy Clinic  
Kootenay Lake Medical Clinic  
Selkirk Veterinary Hospital  
Skead Sawmills Ltd  
The Villa Motel  
Timberland Consultants Ltd  
Kays Road Contracting  
Best Western Baker Street Inn  
Blaylock's Mansion  
Comunita Services Ltd  
DDC Excavating Ltd  
Hume Hotel  
Kootenay Career Development Society  
Kootenay Real Estate Board  
Murray Geological Services  
St Eugene Mission Resort

Tu-Dor Lock & Safe  
A1 Nelson Guest House  
Alfab Manufacturing  
B C Automobile Assoc  
Cool Waters RV Park  
Dr. Michael Inniss  
Mountain View Homes (Retreats for Wellness)  
Paxx Computer Repair Centre Inc  
SHARE Nelson  
Skogstad Law Office  
Tarasoft Corporation  
Bavarian Lookout  
Coleman Properties Ltd  
Downtown Automotive  
Lacroix & Associates  
Nelson Car Wash  
Nelson Ford Sales  
New Creations Design & Drafting  
Win Thrift Store (West Kootenai Women In Need  
Society)  
Live Metal Works Ltd  
Maclean & Taylor Chiropractic  
El Taco Mexican Food  
Allen Mr Bob  
John Smurthwaite  
All Around Septic Services  
Aqua Environmental Assoc. (was Carver)  
Celeste Wildcraft and Foods  
Children's World Day Care Centre  
Curves  
Dr. Jeff Plant  
Dream Tech Designs  
GM Jewellery & Objects  
Gord Faasse  
Heritage Pawn & Used Goods  
Massage Space  
Mediterranean 57 Pizza & Spaghetti House  
Photon Foods  
Playnest Home Daycare  
Mountain Valley Contracting

Thanks to all of our new and renewing members.  
If you have any questions, or concerns, be sure  
to contact us at [info@discovernelson.com](mailto:info@discovernelson.com)  
or call 250 352-3433

## Superhost Workshops

*Is Customer Service important to the success of your Business?*

*Do your employees have the skills and knowledge to provide excellent customer service?*

*The Nelson & District Chamber of Commerce will host workshops that will give your employees the tools required to make your business a*

## **Customer Orientated Business.**



*Superhost offers a fantastic customer service workshop that provides you or your staff with an understanding of the importance of customer skills. It can help make communication with customers more effective and efficient, it can make your employees more attentive to customer needs, and provides participants with an understanding of the social and economic contribution that a healthy industry makes to our community.*

*The Chamber will be presenting more Superhost sessions in 2008. Dates will be based on demand. Cost per employee is just \$65 plus gst. If you would like more information on Superhost, and how you can book your staff members, contact Marg at 250 352-3433 or by emailing [marg@discovernelson.com](mailto:marg@discovernelson.com)*

## **Chamber of Commerce Board of Directors**

### **Executive**

- **President** *Janice Morrison  
Private Member & Kastlerock Bed & Breakfast*
- **Vice President** *Cal Renwick, Nelson Toyota*
- **Past President** *Russell Stocks, Nelson Ford*
- **Secretary Treasurer** *Brent Irving,  
Carmichael, Toews, Irving Inc*

### **Directors**

- *Barry Auliffe, Selkirk College*
- *Chuck Bennett, Black Press Ltd*
- *Elliot Carter, Nelson Chrysler*
- *Harry Davidson, Glass House Optical*
- *Melanie Gettel, Express Newspaper*
- *Brent Holowaychuk, Finley's Irish Bar and Grill & Sage Tapas*
- *Chris Jury, RBC Royal Bank*
- *Bruce Lacroix, Lacroix & Associates Consulting*
- *Barrie McWha, Balfour Golf Club*
- *Travis Mann, Granite Pointe Golf Course*
- *Karen Van Vogt, Investors Group*
- *John Yowek, Nelson and District Credit Union*